

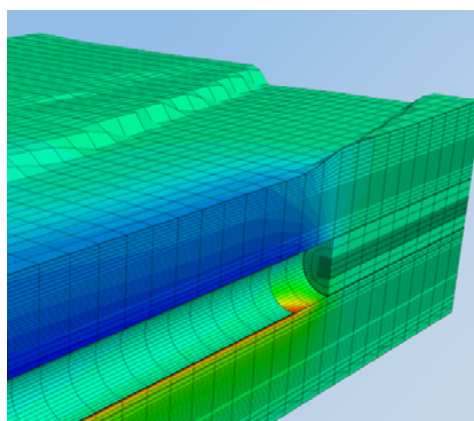
16th International Conference
of the International Association
for Computer Methods
and Advances in Geomechanics

CALL FOR ABSTRACT

Newsletter No. 2 • MARCH 2019

The call for abstract will open on April 15, 2019.

CHALLENGES and INNOVATIONS in GEOMECHANICS



Key Dates

- **Call for abstract:**
April 15, 2019
- **Abstract submission:**
July 1, 2019
- **Acceptance notification:**
August 1, 2019
- **Paper submission:**
December 15, 2019
- **Paper submission (2nd review):**
April 1, 2020
- **Early bird registration fee:**
April 1, 2020
- **Authors' registration:**
April 1, 2020



- The conference programme will include selected oral communications and poster presentations, divided in parallel sessions or mini symposium.
- Abstracts must be submitted through the on-line conference submission system.
- Abstracts will be reviewed by the International Scientific Committee and external peer reviewers.
- The final paper will be published in the conference proceedings (indexed in scopus, WoS, ...) provided that at least one author is registered to the conference.

See detailed submission instructions for authors at iacmag2020.org

PARALLEL SESSIONS:

- | | |
|---|--|
| PS1 - Laboratory and field testing | PS18 - Preservation of historical sites |
| PS2 - Monitoring and remote sensing | PS19 - Gas and petroleum engineering |
| PS3 - Constitutive modelling | PS20 - Underground storage of petroleum, gas, CO2 and nuclear waste |
| PS4 - Coupled T-H-M-C processes | PS21 - Geothermal energy |
| PS5 - Multiphase modelling | PS22 - Offshore technology |
| PS6 - Reliability and risk analysis | PS23 - Energy geostructures |
| PS7 - Surface and near surface structures: excavations, foundations, tunnels | |
| PS8 - Deep structures: tunnels, caverns | |
| PS9 - Dams and earth structures | |
| PS10 - Natural slopes | |
| PS11 - Coastal engineering | |
| PS12 - Mining engineering | |
| PS13 - Earthquake and dynamics | |
| PS14 - Soil-atmosphere interaction | |
| PS15 - Ice mechanics | |
| PS16 - Landfills and waste disposal | |
| PS17 - Ground improvements, reinforcement, geosynthetics | |

MINI-SYMPOSIA:

- MS1** - Complex formations with a block-in-matrix fabric and field testing
- MS2** - Quantification and reduction of uncertainty in geomechanical numerical models
- MS3** - Computational rail geotechnics
- MS4** - Advanced constitutive modeling of soils in practical applications
- MS5** - Large strain problems in geomechanics
- MS6** - Building and infrastructure response to ground movement
- MS7** - Material point method in computational geomechanics

See more on the conference on: www.iacmag2020.org